



228 Haycombe Drive

, Bath, BA2 1PR

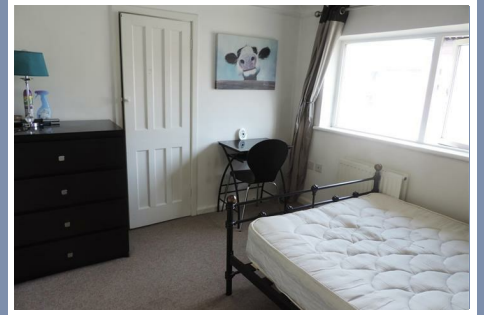
£4,140 PCM



228 Haycombe Drive

, Bath, BA2 1PR

£4,140 PCM



Entrance Hall

White UPVC, Double Glazed Front Door to Front Aspect with Letter Slot. Natural Coloured Carpet to Door, with Wooden Laminate Flooring. Under-stairs Cupboard Housing Shelving Unit. Full Size Cupboard opposite Stairs. Pendant Light Fitment. Doors to both Shower Rooms, Kitchen and Living Room.

Shower Room 1

Double Glazed Window to Front Aspect with Privacy Glass. White Suite consisting of Curved Shower Cubicle with Glass Screen, Low Level W.C and Wash Hand Basin. Full aqua Boarding to Wet Areas in a Natural Marble effect, with Mosaic Style Laminate Flooring. Extractor Fan. Shaver Point. Radiator. Pendant Light Fitment. 2 x Black Shelves. Mirror.

Shower Room 2

Double Glazed Window to Side Aspect with Privacy Glass and Trickle Vent. White Suite consisting of Shower Cubicle with Glass Screen, Low Level W.C and Wash Hand Basin with Vanity. Full aqua Boarding to Wet Areas in a White Mosaic effect, with White Walls. Blue Mosaic Style Laminate Flooring. Extractor Fan. Shaver Point. Radiator. Pendant Light Fitment.

Kitchen/Breakfast Room

White UPVC Double Glazed Windows to Rear and Side Aspect. Fitted Kitchen consisting of Wall and Base Units and Black Marble Effect Work Surfaces. Stainless Steel, 1 1/2 bowl Sink/Drainer. Integrate Electric Oven and Grill. Inbuilt Ceramic Hob. Black Indesit Washing Machine. Integrated Dishwasher. Black 'American Style' Fridge/Freezer. Black Tiling to Work Surfaces, with White walls and Grey Speckle Effect Flooring.

Radiator. Pendent Light Fitting. Worcester Boiler. Circle Dining Table with 2 Stools. Back Door leading to Rear Garden.

Lounge

White UPVC, Double Glazed Patio Doors out to Rear Garden. White Walls with Wooden Laminate Flooring. 2 x Brown Leather 2-Seater Sofas. Brown Coffee Table and Brown Drawer Unit. Cupboard Housing Shelves. Radiator. TV and Telephone Point. Pendent Light Fitment. Door to Bedroom 1.

Bedroom 1

White UPVC Double Glazed Window to Front Aspect with Grey Curtains. Wooden Effect Divan Single Bed. Glass Fronted Wardrobe. Glass Topped Single Desk with Chair. Shelf Unit and Large Horizontal Shelf. White Walls. Wooden Effect Laminate Flooring. Radiator. Pendent Light Fitting.

Landing

Switchback Stairs from Entrance Hall with White Bannister. White Walls. Brown Striped Carpet. Loft Access. Radiator. Pendent Light Fitting. Smoke Alarm. Mirror. Leading to 4x Bedrooms.

Bedroom 3

White UPVC Double Glazed Window to Rear Aspect, with Trickle Vent and Black Curtains. White Walls. Brown Carpet Flooring. Black Double Bed. Glass Fronted Wardrobe. 2 x Black Bedside Tables. Black Wood Drawer Unit, and horizontal Shelf Unit. Brown Wooden Desk. Mirror. Radiator. Pendent Light Fitting.

Bedroom 5

White UPVC Double Glazed Window to Front Aspect with Grey Curtains. White Walls with Picture Rail. Brown Carpet Flooring. Double Black Bed. Black drawer Unit. Single Black Desk with Chair. Cupboard Housing Hanging Rail. Mirror. Radiator. TV Point. Pendent Light Fitment.

Rear Garden

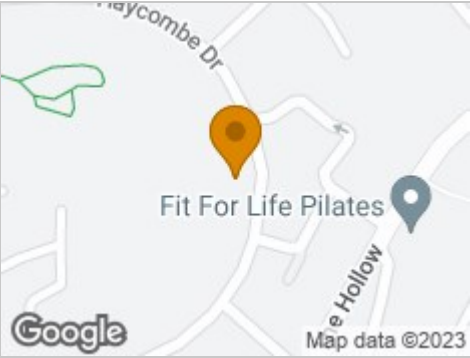
North West Facing. Fully Enclosed with Fencing and Side Gate to Front. Laid to Paving and Stone over 3 Levels, some Bushes. Shed. Outside Tap. Washing Line. Housing Meter Boxes. Outside Table with 6 Chairs.

Front Garden

Fully Enclosed with Gate at Front and Pathway to Front Door. Laid to Stone with some Bushes. Outside Light. 2 x Hanging Basket Brackets.



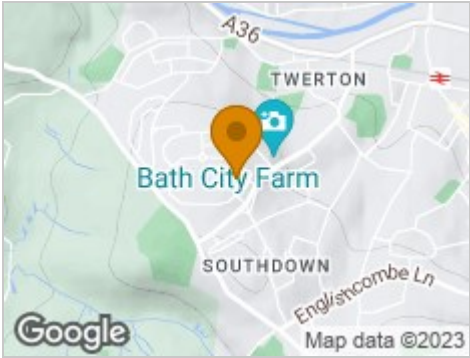
Road Map



Hybrid Map



Terrain Map



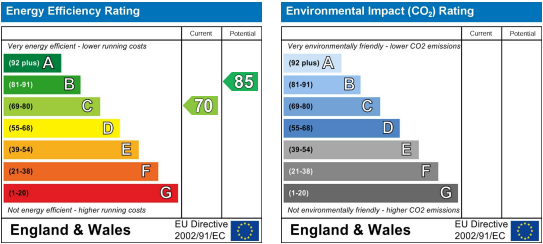
Floor Plan



Viewing

Please contact our Aquarius Homes Office on 01225 840007 if you wish to arrange a viewing appointment for this property or require further information.

Energy Efficiency Graph



These particulars, whilst believed to be accurate are set out as a general outline only for guidance and do not constitute any part of an offer or contract. Intending purchasers should not rely on them as statements of representation of fact, but must satisfy themselves by inspection or otherwise as to their accuracy. No person in this firms employment has the authority to make or give any representation or warranty in respect of the property.